



# Natural Linen



## Features & Benefits

- Made in Canada
- IMO MED & Wheelmark certified
- Bleach Resistant
- Mildew Resistant
- Contains Bio-based Renewable Ingredients
- Phthalate free formulation
- 100% Vegan
- Skin Safe (ISO 10993-10)
- EN71-3 safety for toys
- REACH Compliant
- No Ozone Depleting Chemicals
- No Bisphenol A (BPA)
- No PBTs
- Bromine-free, no HFRs

## Specification

- 137cm (+5cm)
- 695g/m<sup>2</sup> (±45)
- 1.0mm (±0.1)
- Adhesion of coatings (Newton/25.4mm)  
W: ≥27 F: ≥27
- 32°C
- No significant wear after 300,000 cycles
- ASTM G153; Cycle 1, 1000 hrs  
Min AATCC 4, UV coef ≥7 Blue Wool Scale
- 99% reduction of bacteria on the surface of the coated fabric
- Fire Retardancy:  
IMO MSC 88/26/ADD.2 PART 8 (3.1 & 3.2)  
EN1021 (Part 1 & 2)  
BS 5852 Source 0, 1 (Cigarette & Match)  
NF P 92-503 (M2)  
DIN 4102 (B2)  
SN 198'898 & VKF  
AS1530.03  
FAR 25-853  
R118 Annex 6, 7, 8  
ISO 3795 ≤100mm/min (FMVSS302)

## Recommended Applications



## Care & Cleaning

Easily cleanable with water & soap.  
Use Bleach (9:1 ratio), Isopropyl Alcohol (70%) or Hydrogen Peroxide (3%) to disinfect.  
For detailed instructions, visit [www.morberneurope.com](http://www.morberneurope.com)

## Content

Vinyl

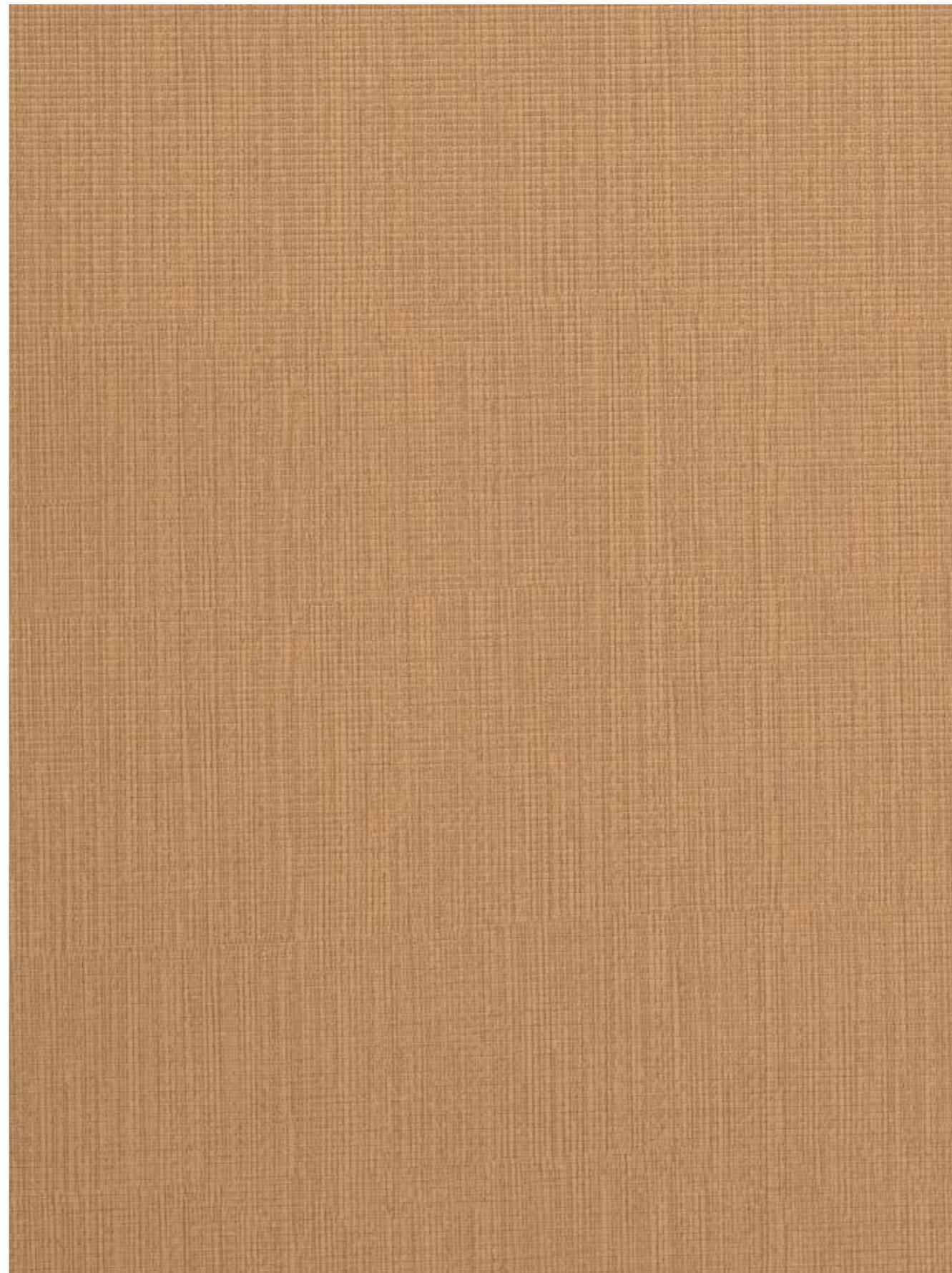
## Backing

100% Recycled Polyester

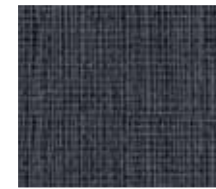
For more information, visit [www.morberneurope.com](http://www.morberneurope.com)  
or email us at [europe.sales@morbern.com](mailto:europe.sales@morbern.com)



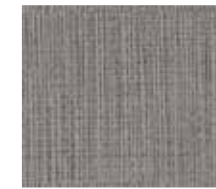
# Natural Linen



Potters Clay NL-009



Charcoal NL-012



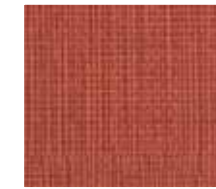
Grey NL-011



Storm NL-014



Navy NL-015



Burnt Orange NL-007



Cayenne NL-008



Berry NL-018



Ganache NL-005



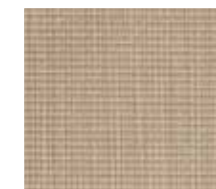
Russet NL-016



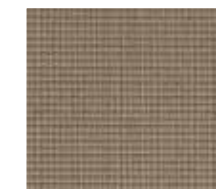
Sunset NL-006



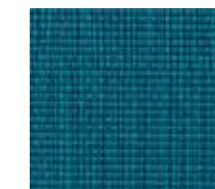
Maize NL-020



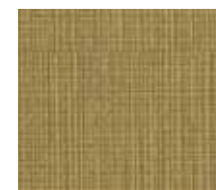
Olive NL-024



Mocha NL-026



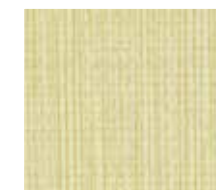
Teal NL-022



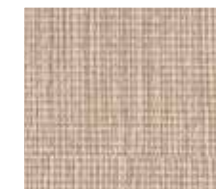
Moss NL-013



Haystack NL-004



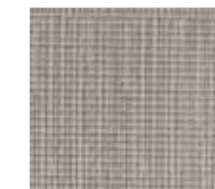
Bamboo NL-010



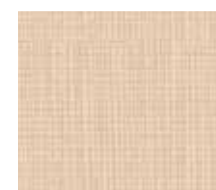
Wheat NL-021



Sepia NL-017



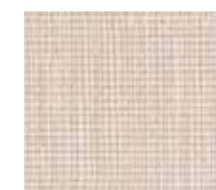
Basil NL-023



Butter NL-003



Tan NL-002



Barley NL-025



Pearl NL-001